

**WHERE TO LOCATE DETECTORS:**

Detectors are to be located on every level of a residence, (basement, first floor, second floor) excluding crawl spaces and unfinished attics, and in every separate sleeping area, between sleeping areas and living areas such as the kitchen, garage, basement or utility room. In homes with only one sleeping area on one floor, a detector is to be placed in the hallway outside the bedrooms as shown in Figure 1. In single floor homes with two separate sleeping areas, two detectors are required, outside each sleeping area as shown in Figure 2. In multi-level homes, detectors are to be located outside sleeping areas and at every finished level of the home as shown in Figure 3. Basement level detectors are to be located in close proximity to the bottom of basement stairwells as shown in Figure 4.

**WHERE NOT TO LOCATE DETECTORS:**

To avoid false alarms and/or improper operation, avoid installation of smoke detectors in the following areas:

- Kitchens-smoke from cooking may cause a nuisance alarm.
- Bathrooms-excessive steam from a shower may cause a nuisance alarm.
- Near forced air ducts-used for heating or air conditioning-air movement may prevent smoke from reaching detector.
- Near furnaces of any type-air and dust movement and normal combustion products may cause a nuisance alarm.
- The 4 inch "Dead Air" space where the ceiling meets the wall, as shown in Figure 5.
- The peak of an "A" frame type of ceiling-"Dead Air" at the top may prevent smoke from reaching detector.

**FURTHER INFORMATION ON DETECTOR PLACEMENT:**

For further information about smoke detector placement consult the National Protection Association's Standard No. 74-1984, titled "Household Fire Warning Equipment". For Carbon monoxide alarms, their publication is Recommended Practice #720. These publications may be obtained by writing to the Publication Sales Department, National Fire Protection Association, Batterymarch Park, Quincy, MA 02269.

**CARBON MONOXIDE ALARMS** are to be located in every separate sleeping area per NFPA 720 and manufacturer's recommendations

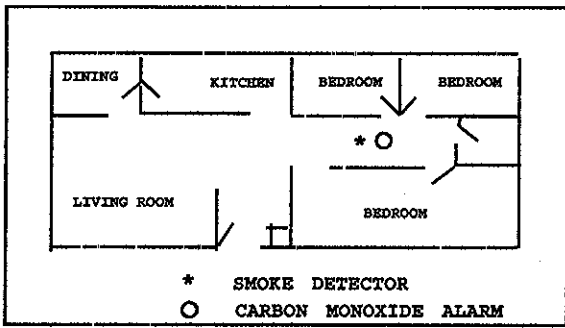


Figure 1

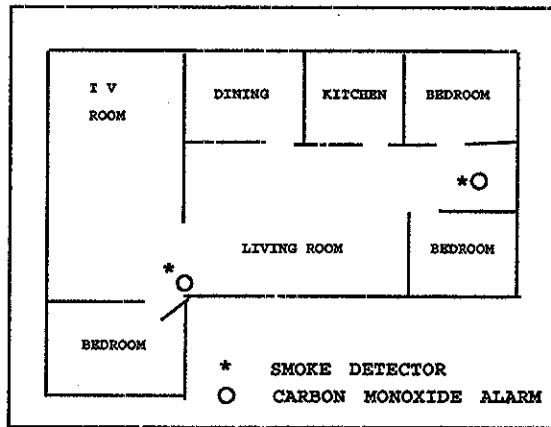


Figure 2

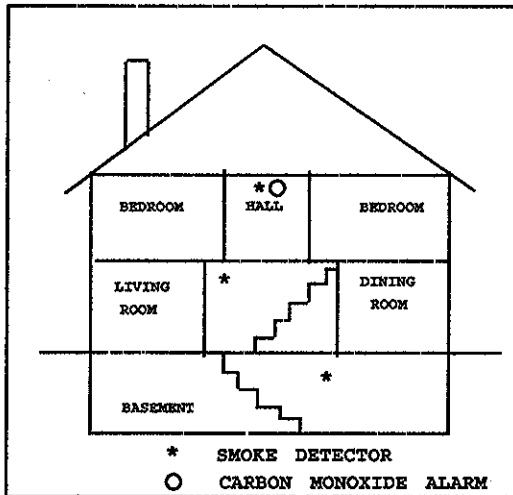


Figure 3

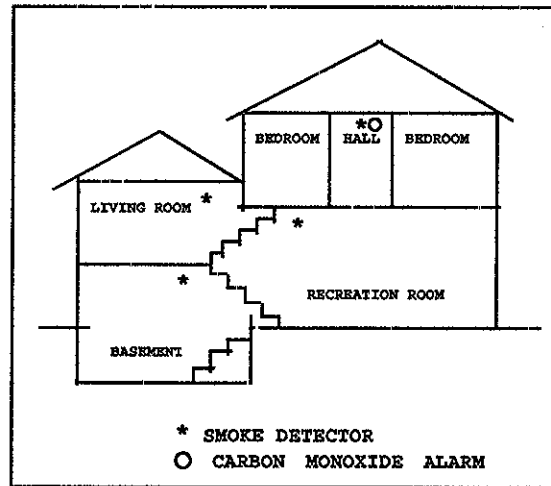


Figure 4

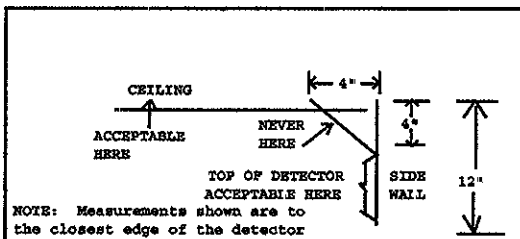


Figure 5

## **Numbering of Buildings**

(Adopted 12-30-1991 as Ord. No. 1991-26)

### **25-6 Definitions.**

As used in this article, the following terms shall have the meanings indicated:

**BUILDING**—Includes all houses, dwellings, stores, business places and other buildings which front on any street in the township or which exist on any tax lot in the township.

**STREET**—As defined in 50-3 of this code.

### **25-7 Assignment of numbers.**

The Municipal Engineer shall plot on the House Numbering Map of the township all of the properties which now or hereafter front on or have ingress or egress from any street and shall designate and assign a number therefore.

### **25-8 Numbers to be visible.**

- A. The owner in possession of any building for which an official number is designated shall be required at his or her own expense to place the official number in a conspicuous place so that it is clearly visible from the public street upon which ingress or egress may be gained. The number shall be placed in such a location as to make it clearly evident which driveway provides ingress and egress to the building so numbered. Numbers placed on mailboxes for mail delivery purposes shall not satisfy the requirements of this article unless the location of said mailbox is immediately adjacent to and on the same side as the driveway providing ingress and egress.
- B. The house number numerals shall be of a size sufficient to be readily seen and interpreted from the public roadway, but in no event smaller than three inches in height, and shall preferably be of a reflectorized material on a contrasting background.
- C. The number may be placed on the building, provided that it can be seen and read from the public road; otherwise, if the building is set back one hundred feet or more, the number must be placed near the intersection of the driveway with the public road.
- D. In the case of a commercial unit within a shopping center, the number must be readily visible from the main traffic circulation aisle of the center. The color of the numeral shall be in sharp contrast to the color of the background, and it shall be of bright or reflective material so as to be readily visible at night when a light is cast upon it.